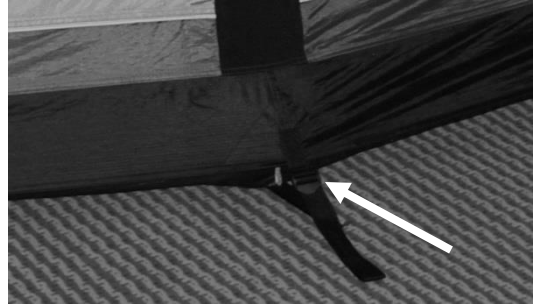


## AEROTECH DRIVEAWAY 4 & 4XL



In order to prevent any tube 'Creasing' or 'Kinking' Please ensure that the adjustable webbing pegging loops at the base of each Aerotech Pole are fully extended before inflation.

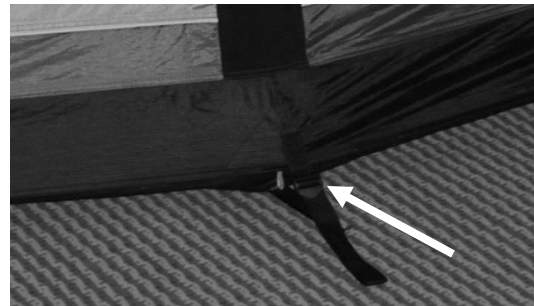


Once all tubes are inflated and the tent is standing you can then adjust the webbing pegging loops accordingly, ensuring that the Aerotech tubes are smooth and free from 'Kinks' or 'Creases'

## AEROTECH DRIVEAWAY 4 & 4XL



In order to prevent any tube 'Creasing' or 'Kinking' Please ensure that the adjustable webbing pegging loops at the base of each Aerotech Pole are fully extended before inflation.



Once all tubes are inflated and the tent is standing you can then adjust the webbing pegging loops accordingly, ensuring that the Aerotech tubes are smooth and free from 'Kinks' or 'Creases'